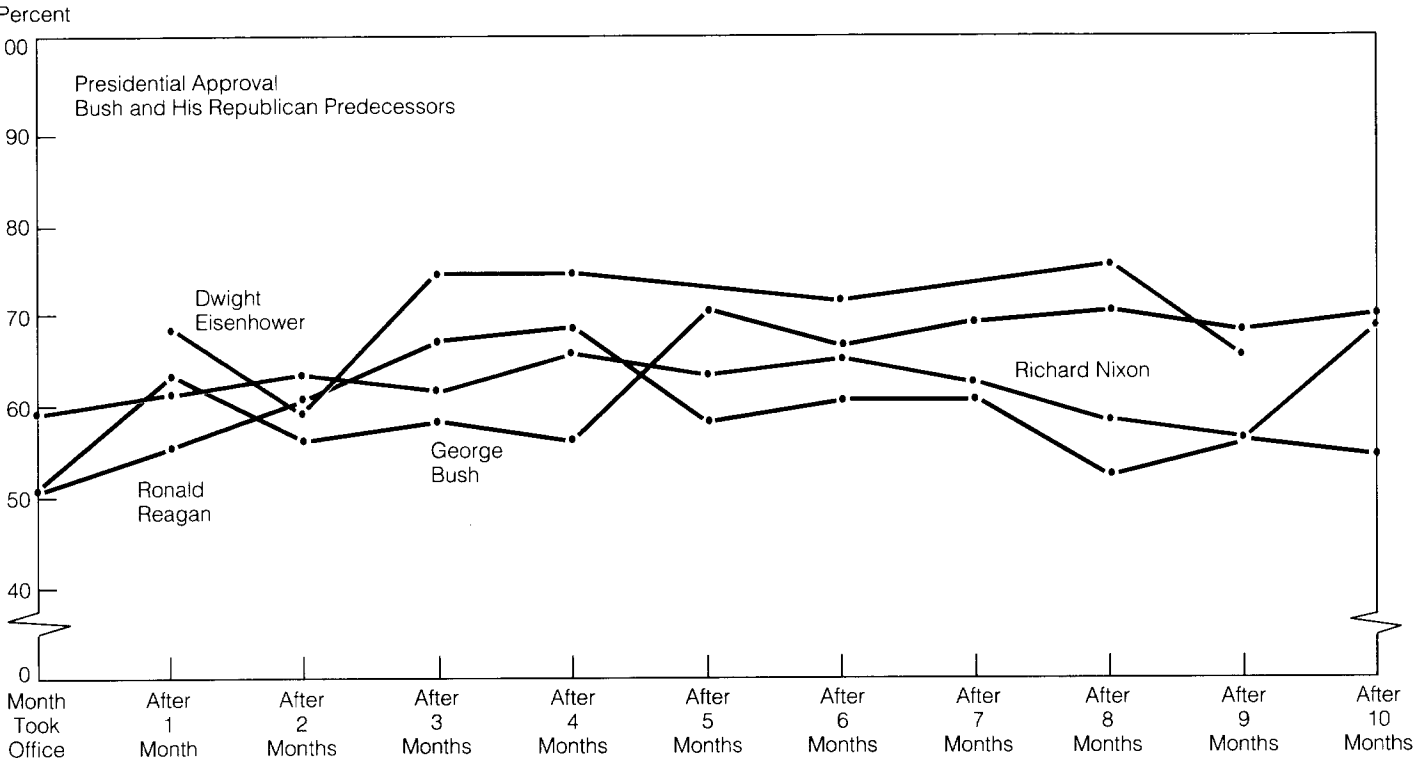


# BUSH AT YEAR ONE

**Question:** Do you approve or disapprove of the way (name of president) is handling his job as President?



	Eisenhower (1/53)	Nixon (1/69)	Reagan (1/81)	Bush (1/89)
Month Took Office	-	59%	51%	51%
After 1st Month	68%	61	55	63
After 2nd Month	59	63	60	56
After 3rd Month	74	61	67	58
After 4th Month	74	65	68	56
After 5th Month	-	63	58	70
After 6th Month	71	65	60	66
After 7th Month	-	62	60	69
After 8th Month	75	58	52	70
After 9th Month	65	56	56	68
After 10th Month	-	68	54	70
After 11th Month	60	59	49	71

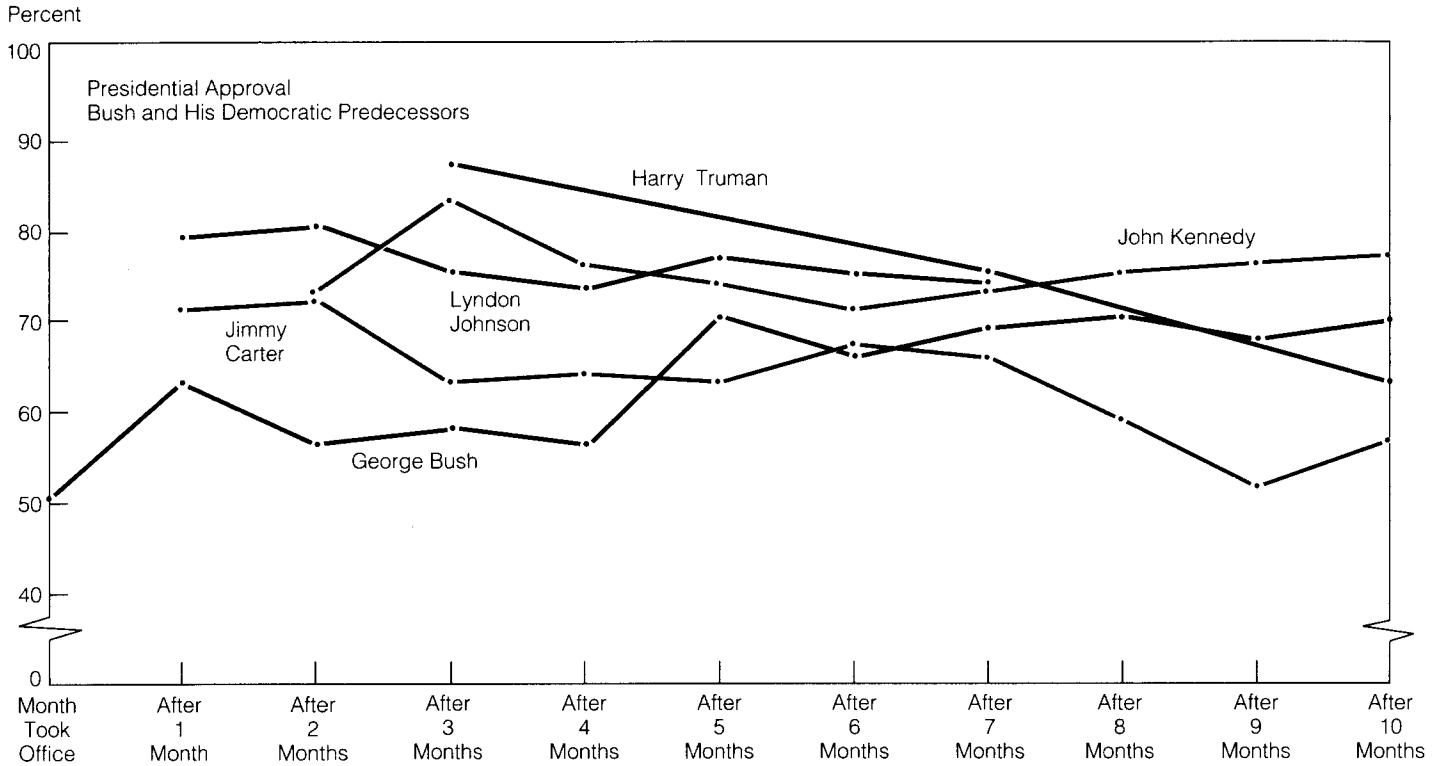
PARTY IDENTIFICATION		
Year	Republican or Leaning Republican	Democrat or Leaning Democrat
1980	34%	53%
1981	39	49
1982	35	52
1983	35	53
1984	40	48
1985	43	47
1986	42	47
1987	41	49
1988	40	47
1989	44	45

**Source:** Surveys by the Gallup Organization, latest that of December 7-10, 1989.

**Source:** Surveys by CBS News/*New York Times*, pooled for each year, latest that of September 12-20, 1989.

Americans have given President George Bush high marks during his first year, as the Gallup data show. His approval scores are generally higher than Ronald Reagan's for the same period. The GOP has made impressive gains in the 1980s in party identification. Rough parity now exists between the parties.

**Question:** Do you approve or disapprove of the way (name of president) is handling his job as President?



	Truman (4/45)	Kennedy (1/61)	Johnson (11/63)	Carter (1/77)	Bush (1/89)
Month Took Office	-	-	-	-	51%
After 1st Month	-	-	79%	71%	63
After 2nd Month	-	73%	80	72	56
After 3rd Month	87%	83	75	63	58
After 4th Month	-	76	73	64	56
After 5th Month	-	74	77	63	70
After 6th Month	-	71	75	67	66
After 7th Month	75	73	74	66	69
After 8th Month	-	75	-	59	70
After 9th Month	-	76	-	51	68
After 10th Month	63	77	-	56	70
After 11th Month	-	78	-	57	71

PARTY IDENTIFICATION (18-29 year-olds)		
Year	Republican or Leaning Republican	Democrat or Leaning Democrat
1980	33%	54%
1981	42	47
1982	39	49
1983	37	50
1984	45	44
1985	48	42
1986	47	41
1987	47	43
1988	44	43
1989	50	39

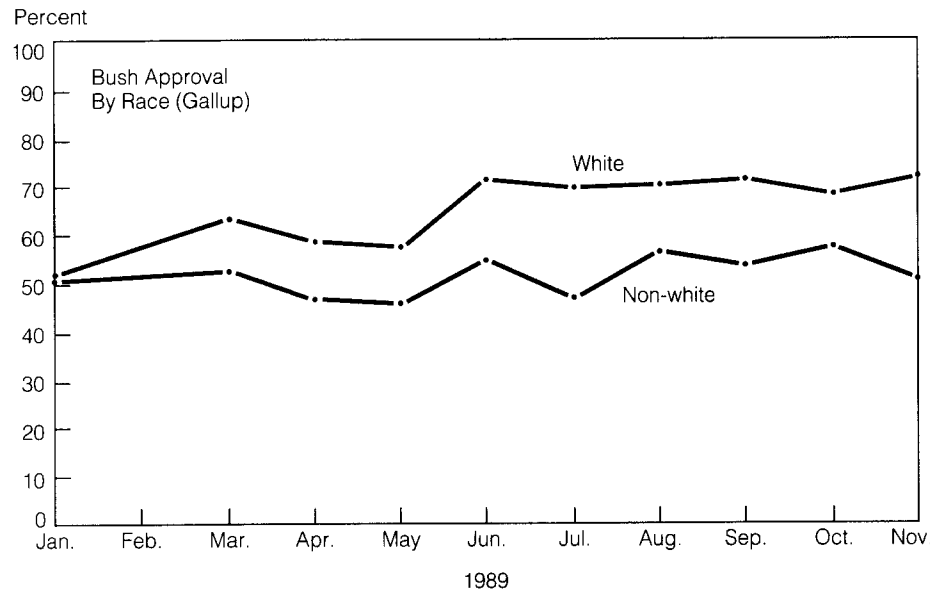
Source: Surveys by the Gallup Organization, latest that of December 7-10, 1989.

Source: Surveys by CBS News/New York Times, pooled for each year, latest that of September 12-20, 1989.

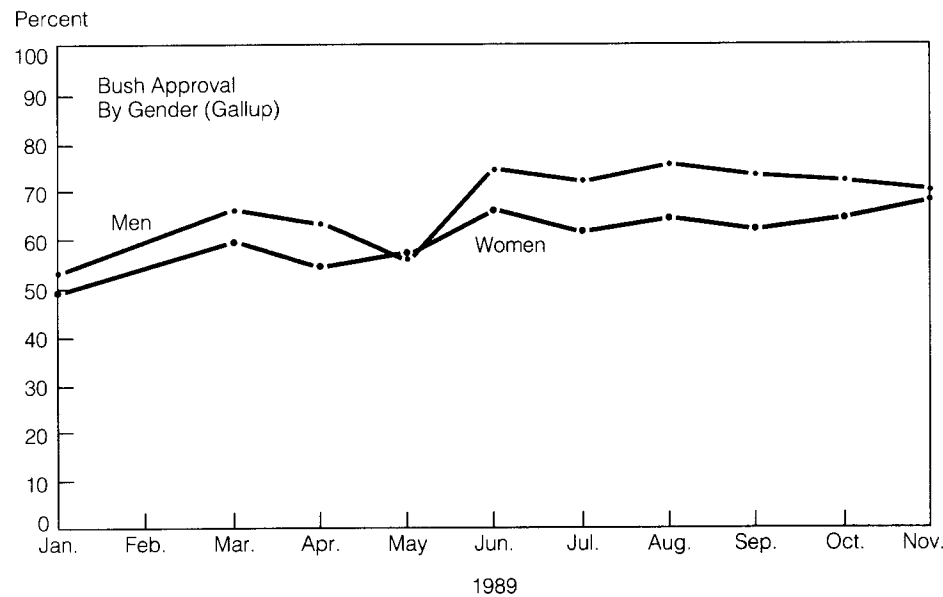
Although he enjoys substantial popularity, President Bush is just above average when compared to all of his postwar Republican and Democratic predecessors. Young people are now giving the GOP majority support.

# DIFFERENT GROUPS RATE THE PRESIDENT

**Question:** Do you approve or disapprove of the way George Bush is handling his job as president?



	Non-white/Black		White	
	Gallup	CBS/ NYT	Gallup	CBS/ NYT
Jan.	51%	-	52%	-
Feb./Mar.	53	47%	64	64%
Apr.	47	47	59	64
May	46	30	58	66
Jun.	55	-	72	-
Jul.	47	48	70	72
Aug.	57	-	71	-
Sep.	54	54	72	73
Oct.	58	-	69	-
Nov.	51	50	72	66



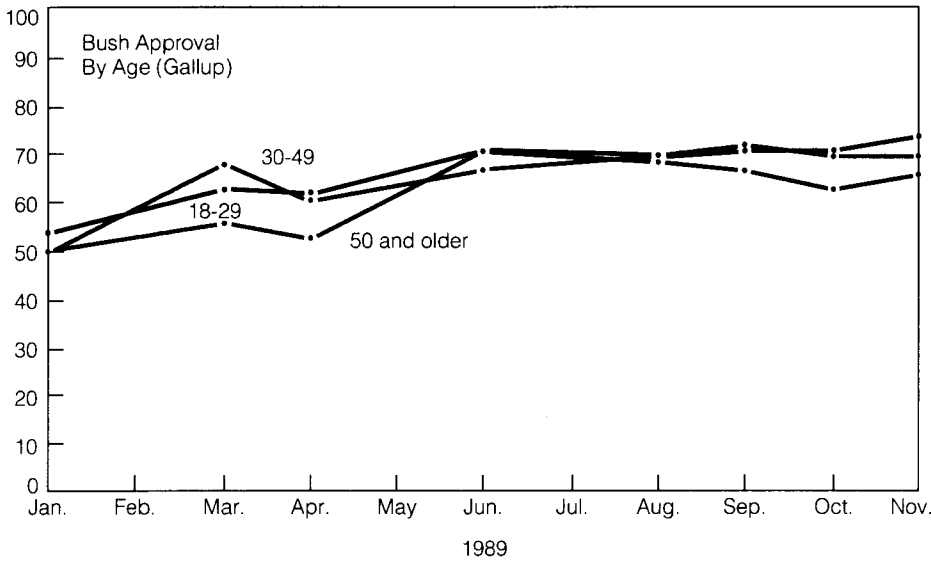
	Men		Women	
	Gallup	CBS/ NYT	Gallup	CBS/ NYT
Jan.	53%	-	49%	-
Feb./Mar.	66	64%	59	58%
Apr.	63	64	54	59
May	56	66	57	56
Jun.	74	-	66	-
Jul.	72	71	61	64
Aug.	75	-	64	-
Sep.	73	73	62	68
Oct.	72	-	64	-
Nov.	70	67	68	60

Source: Surveys by the Gallup Organization, latest that of November 9-12, 1989 and CBS News/*New York Times*, latest that of November 26-28, 1989.

The differences in George Bush's approval among key groups are shown on these two pages. A majority of black Americans now approve of the job he is doing. He is slightly less popular among women than men.

**Question:** Do you approve or disapprove of the way George Bush is handling his job as President?

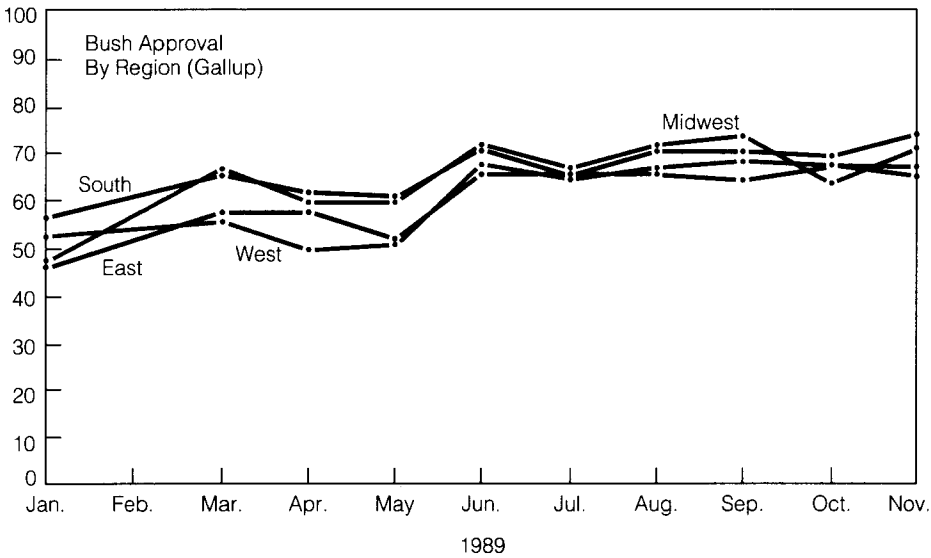
Percent



**By Age**

Gallup	18-29	30-49	50+
Jan.	54%	50%	50%
Feb./Mar.	63	68	56
Apr.	62	61	53
Jun.	71	67	71
Aug.	70	70	69
Sep.	71	72	67
Oct.	71	70	63
Nov.	74	70	66

Percent



**By Region**

Gallup	E	MW	S	W
Jan.	47%	48%	57%	53%
Feb./Mar.	58	67	66	56
Apr.	58	60	62	50
May	52	60	61	51
Jun.	66	72	71	68
Jul.	66	67	66	65
Aug.	66	72	71	67
Sep.	65	74	71	69
Oct.	68	64	70	68
Nov.	65	71	74	67

Source: Surveys by the Gallup Organization, latest that of November 9-12, 1989.

Young Americans tend to give George Bush higher marks than older Americans. The differences in Bush approval by region are small.