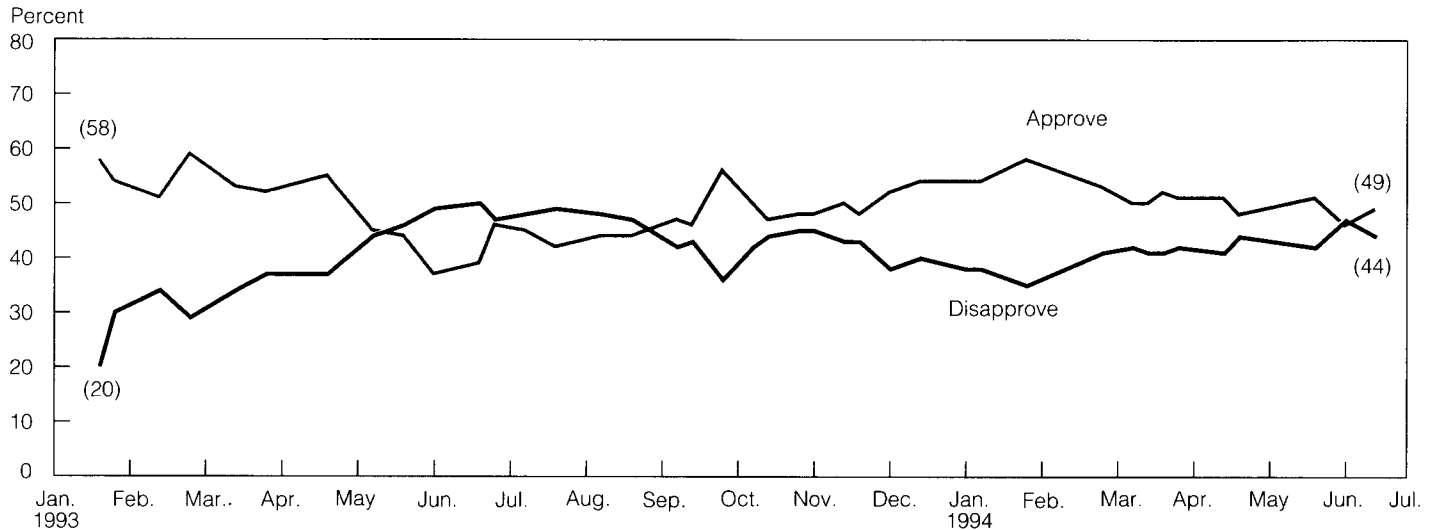


# CLINTON'S RATINGS

President Clinton's approval rating hovers in the high forties and low fifties, with his disapproval rating in the mid-forties. After his seventeenth month in office, Clinton is slightly more popular than Reagan, Carter, and Ford at comparable points in their terms.

Question: **Do you approve or disapprove of the way Bill Clinton is handling his job as president?**



Source: Surveys by the Gallup Organization for *USA Today* and CNN, latest that of June 11-12, 1994.

## Recent ratings

Date	Organization	Approve	Disapprove	Date	Organization	Approve	Disapprove
2/10/94	Yankelovich/Time/CNN	53%	38%	5/20-22	Gallup/USA Today/CNN	51%	42%
2/15-17	CBS News/New York Times	50	37	6/2	Yankelovich/Time/CNN	51	40
2/24-27	ABC News/Washington Post	58	38	6/3-6	Gallup/USA Today/CNN	46	47
2/26-28	Gallup/USA Today/CNN	53	41	6/10-14	NBC News/Wall Street Journal	52	39
3/4-8	ABC News/Washington Post	52	40	6/11-12	Gallup/USA Today/CNN	49	44
3/4-8	NBC News/Wall Street Journal	55	36	6/15-16	Yankelovich/Time/CNN	49	42
3/7-8	Gallup/USA Today/CNN	50	42	6/20-22	CBS News	47	40
3/8-10	CBS News/New York Times	50	39	6/23-26	ABC News/Washington Post	50	44
3/8-11	New York Times	49	40				
3/9-10	Yankelovich/Time/CNN	49	39				
3/11-13	Gallup/USA Today/CNN	50	41				
3/16-21	Times Mirror Center	45	42				
3/18-22	Washington Post	47	45				
3/25-27	Gallup/USA Today/CNN	52	41				
3/25-27	ABC News/Washington Post	57	41				
3/28-30	Gallup/USA Today/CNN	51	42				
3/31-4/1	PSRA/Newsweek	47	39				
4/6-7	Yankelovich/Time/CNN	51	39				
4/7-8	PSRA/Newsweek	46	37				
4/16-18	Gallup/USA Today/CNN	51	41				
4/16-19	Los Angeles Times	54	39				
4/21	Yankelovich/Time/CNN	49	40				
4/21-23	CBS News/New York Times	46	42				
4/22-24	Gallup/USA Today/CNN	48	44				
4/30-5/3	NBC News/Wall Street Journal	57	37				
5/4-5	Yankelovich/Time/CNN	48	43				
5/12-15	ABC News/Washington Post	51	44				
5/12-15	Times Mirror Center	46	42				
5/18-19	Yankelovich/Time/CNN	48	44				

	Month took office	After twelfth month	After seventeenth month
Truman (4/45 took office)	—	50%	32%**
Eisenhower (1/53)	68%*	68	61
Kennedy (1/61)	—	77	71
Johnson (11/63)	79*	69	67
Nixon (1/69)	59	61	55
Ford (8/74)	71	46	46
Carter (1/77)	71*	52	42
Reagan (1/81)	51	47	44
Bush (1/89)	51	80	69
Clinton (1/93)	54	58	49

Note: Latest survey of each month shown. \* = after first month. \*\* = after eighteenth month.  
Source: Surveys by the Gallup Organization, latest that of June 11-12, 1994.